

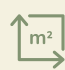
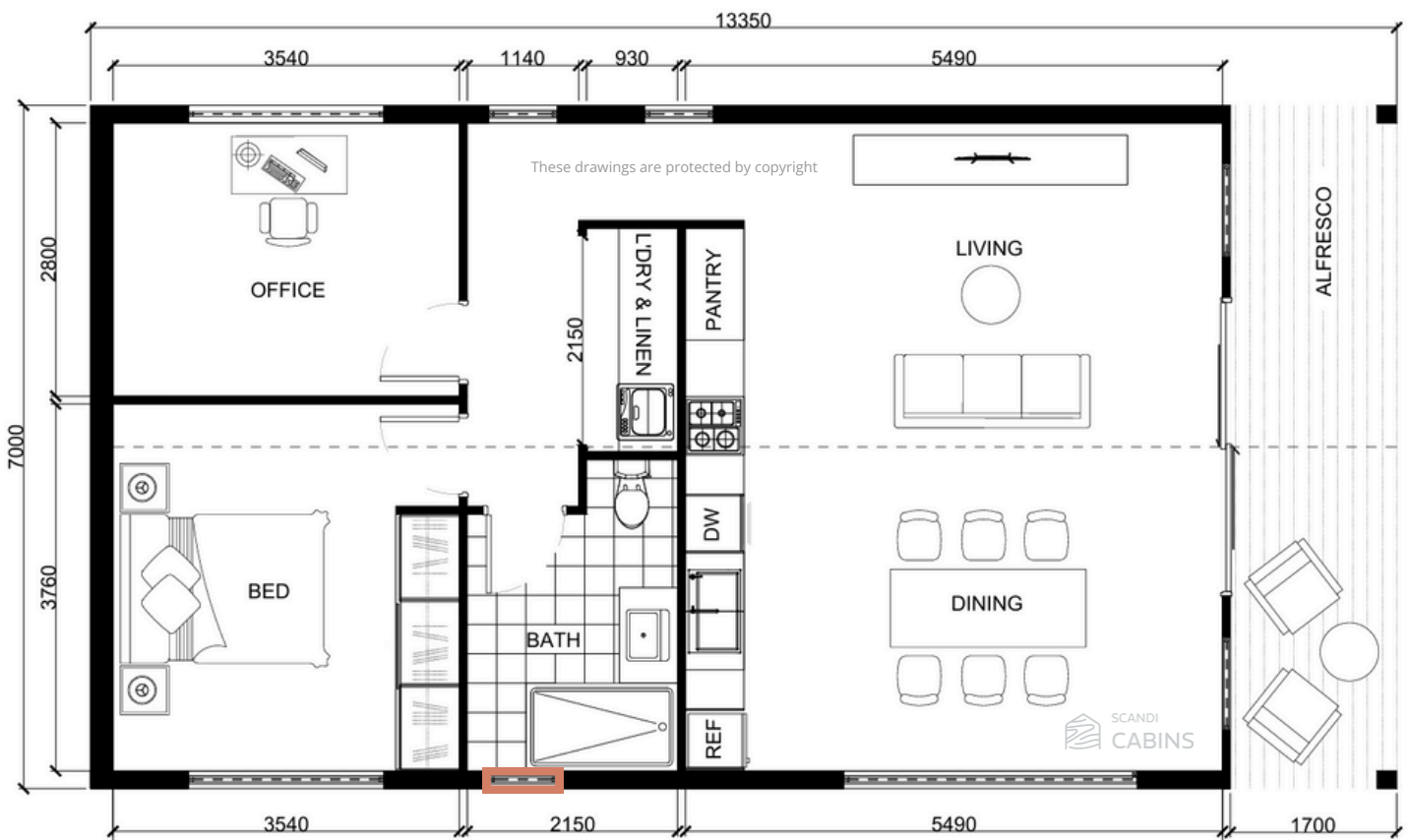



# Nordica


 2
  1
  94m<sup>2</sup>




The Nordica 2-bedroom granny flat is thoughtfully designed for modern living, featuring a seamless open-plan layout that integrates the living, dining, and kitchen areas for easy flow and functionality. With a spacious bedroom and bathroom, along with a dedicated laundry and storage room, it combines practicality with style. Its high cathedral ceilings and large windows enhance the sense of space and light, making the Nordica both a stylish and highly functional addition to any backyard.



 External and internal LGL wall thickness (mm) shown in this drawing

 External wall construction: 80mm LGL glulam mass timber walls plus ~120mm insulation and cladding if required

 Floor plan can be flipped, must be specified on order

 Customizable placement of windows marked red on the floor plan

# Features

Nordica



- Ultra-high cathedral ceilings
- Ample windows allow natural light
- Open-plan living
- Sizable kitchen with pantry
- Spacious bedrooms
- Dedicated laundry/linen room
- Internal timber creates a cosy and healthy space
- Built on slab or raised subfloor
- Naturally insulated mass timber walls
- Double-glazed windows
- Prefab components built on-site in 6 days<sup>^</sup>

<sup>^</sup>on prepared foundation to lockup stage

Get in touch to discuss your project details, receive a rough estimate, or schedule a site inspection with one of our expert builders. Let's bring your dream backyard space to life!

**START YOUR PROJECT TODAY**

[CONTACT US](#)

